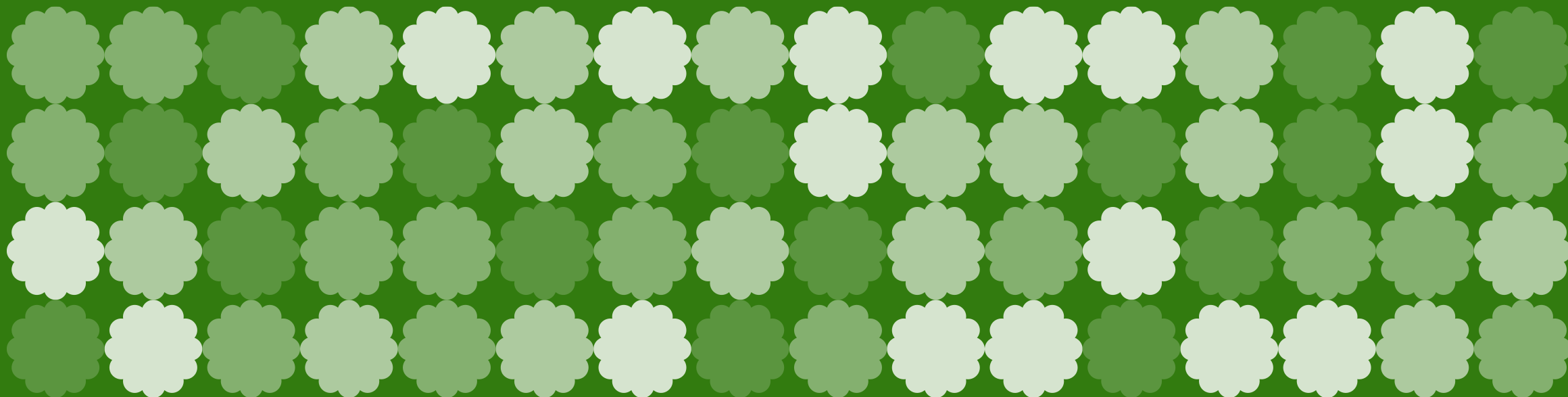


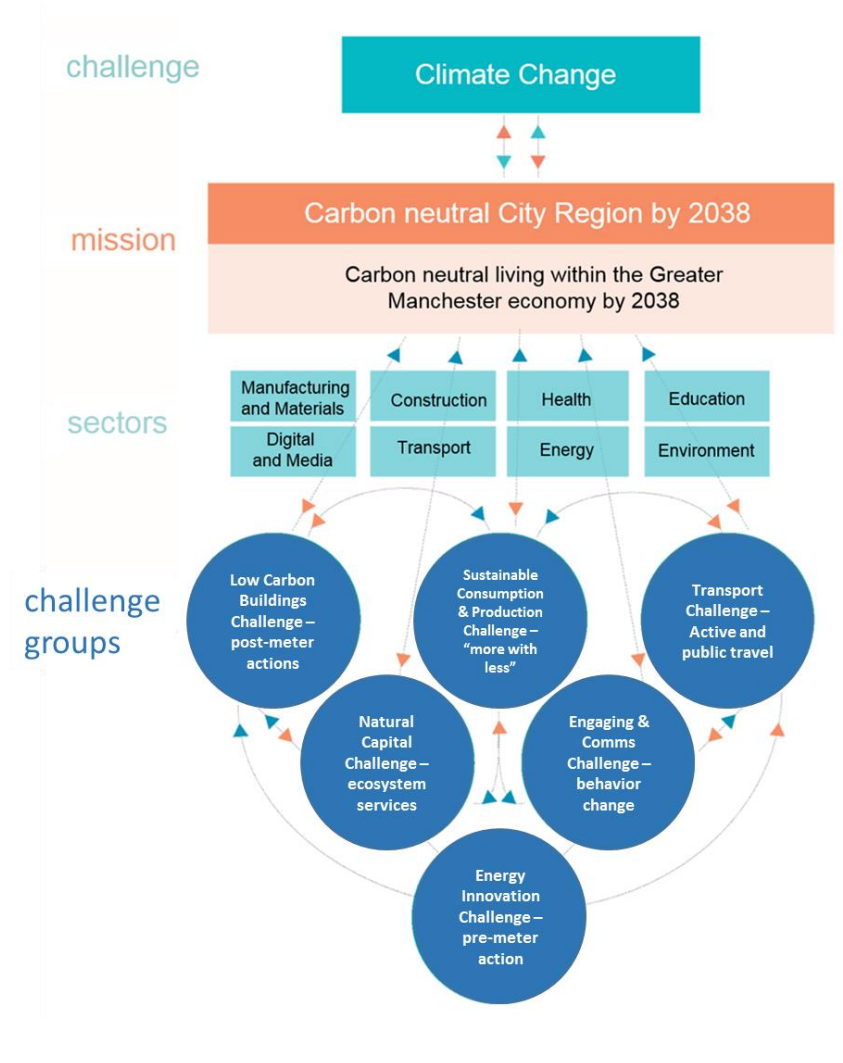
# Monitoring and Evaluation Approaches Greater Manchester

**GREATER  
MANCHESTER**  
DOING THINGS DIFFERENTLY FOR THE ENVIRONMENT



# Background and Governance

- In 2019 Greater Manchester launched its first 5 Year Environment Plan.
- As part of this we set out the intention to take a mission-based approach.
- This governance systems supports collaborative, cross sectoral delivery.



# Current M&E approaches

- M&E has been developed alongside the delivery of the 5 Year Environment Plan.
- Examples of measures include
  - Number of retrofits, EPC data, renewable energy generation, EV charging infrastructure, mode share, trees planted, hectares enhanced, volunteers,
- Reporting is done quarterly to senior leaders and challenge groups.
- Creating organisational change through decision support tool.

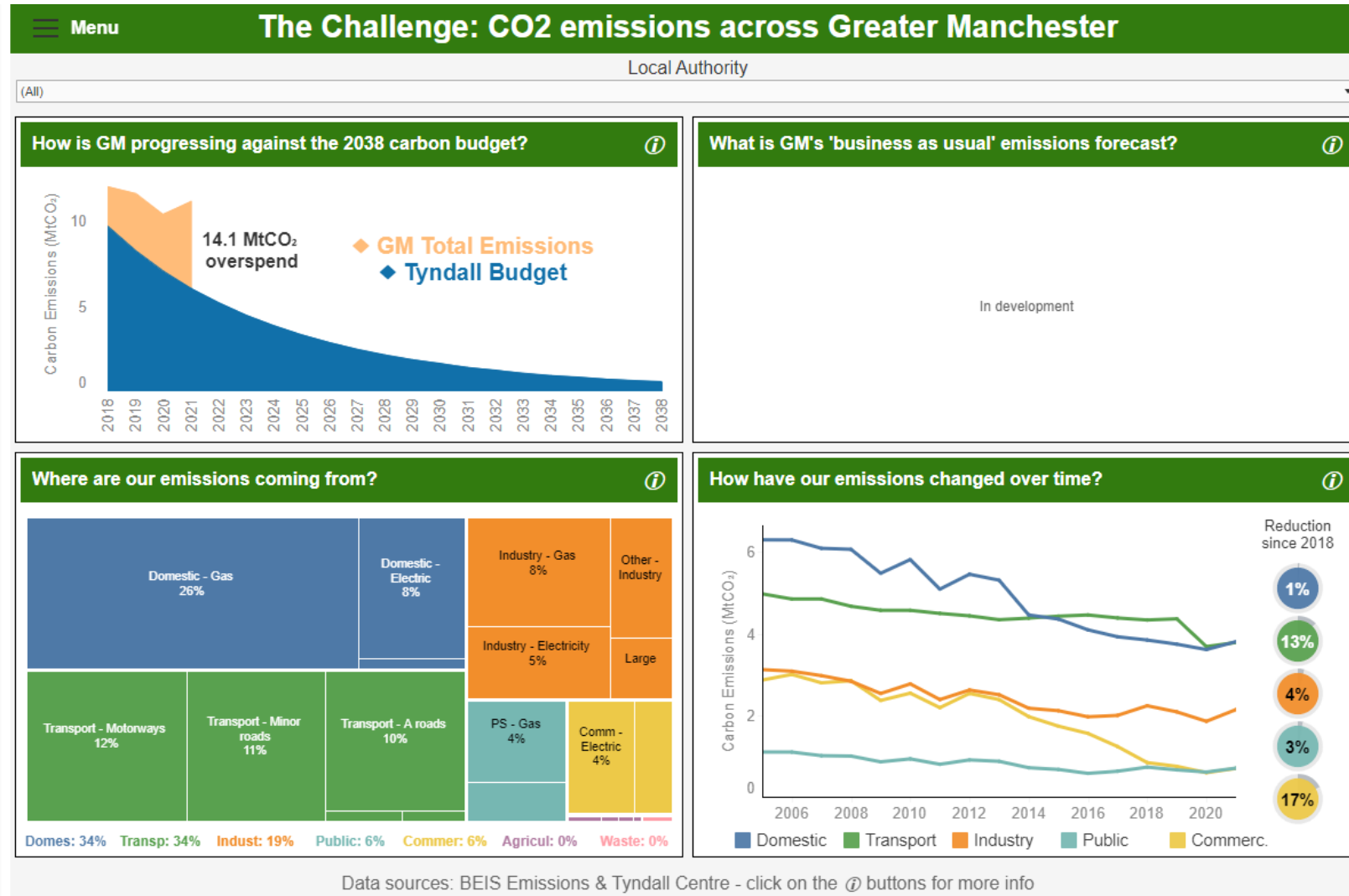
# Current M&E

What targets are in the 5YEP and which are being tracked here? [\(click icon to navigate to page\)](#)

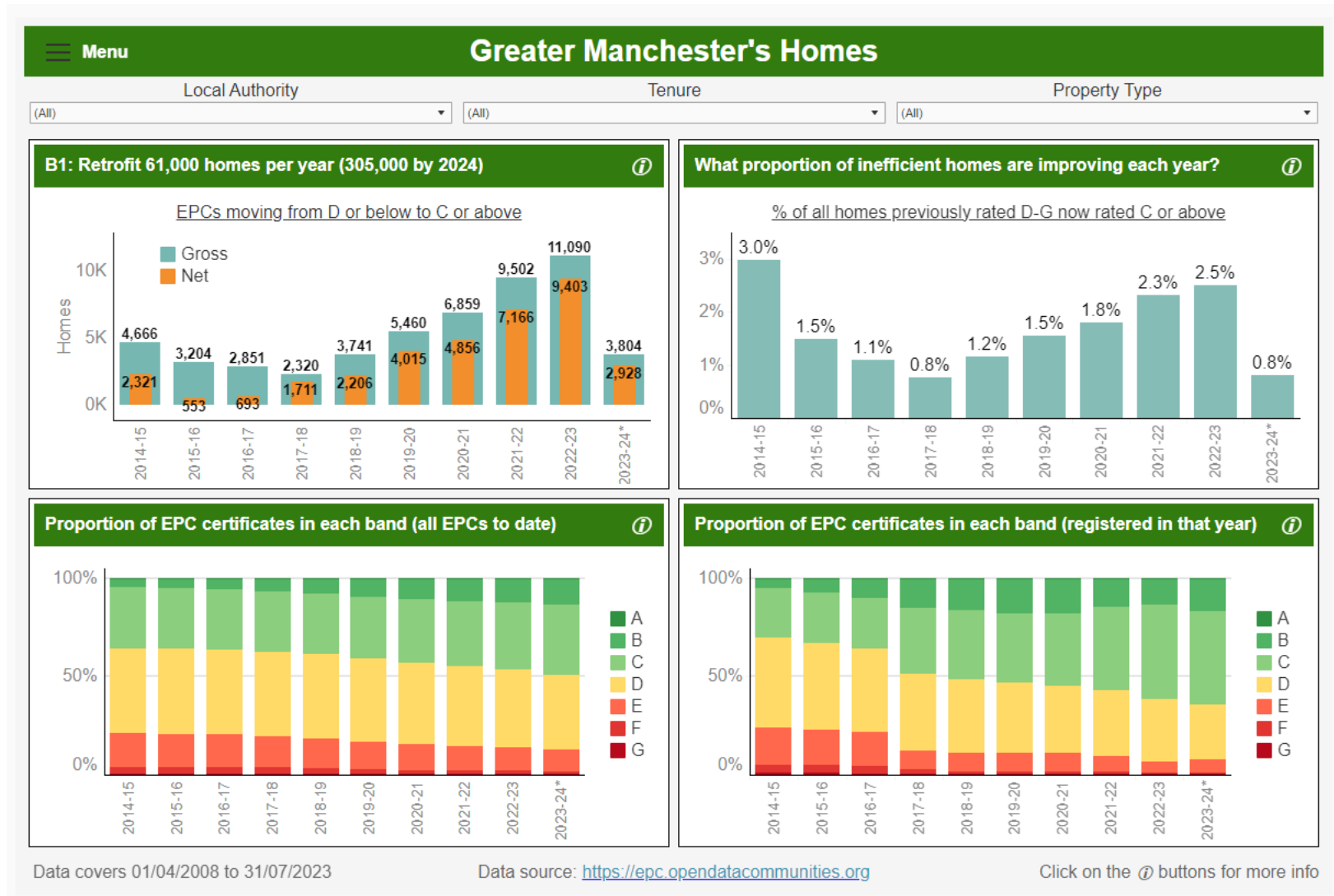


Emissions		<b>Goal: Be carbon-neutral by 2038</b>	See 'Emissions' page
Energy		E1: Increase local renewable energy (electricity) generation, adding at least 45MW by 2024	See 'Energy' page
		E2: Decarbonise how we heat buildings, adding at least 10TWh of low carbon heating by 2024	See 'Energy' page
		E3: Increase diversity & flexibility of electricity supply, adding at least 45MW of diverse & flexible load by 2024	See 'Energy' page
Transport		T1: Increase use of public transport and active travel, with car use reduced to less than 50% of daily GM trips by 2040	See 'Transport' page
		T2: Phase out fossil-fuelled private vehicles for zero emission (tailpipe) alternatives, with 200,000 EVs in GM by 2024	See 'Transport' page
		T3: Tackle the most polluting vehicles on our roads	In development
		T4: Establish a zero emissions bus fleet, with all buses zero emissions (tailpipe) by 2035	See GMS dashboard
		T5: Decarbonising freight transport and shifting freight to rail and water transport	In development
Buildings		B1: Reduce heat demand from existing homes by retrofitting 61,000 homes per year	See 'Homes' page
		B2: Reduce heat demand from existing commercial and public buildings by 10% by 2025	In development
		B3: Reduce heat demand in new buildings, with all new development net zero carbon by 2028	In development
SCP		SCP1: Produce goods more sustainably, reducing emissions from industry by 38% by 2025 compared to 2018 levels	See 'SCP' page
		SCP2: Become more responsible consumers, with 2024 waste production increased by no more than 20% from 2018	See 'SCP' page
		SCP3: Manage our waste as sustainably as possible, achieving a recycling rate of 55% by 2024	See 'SCP' page
		SCP4: Reduce unnecessary food waste	In development
Natural Environment		NE1: Manage our land sustainably, including planting 1m trees by 2024 and improving greenspace for nature	See 'Natural Env.' page
		NE2: Manage our water and its environment sustainably, enhancing 542km of waterways by 2027	See 'Natural Env.' page
		NE3: Achieve a net gain in biodiversity for new development	In development
		NE4: Increase investment into our natural environment	In development
		NE5: Increase engagement with our natural environment, through volunteering and access to local greenspace	See 'Natural Env.' page

# Current M&E



# Current M&E



# Next steps

- M&E process is being developed alongside next environment plan development.
  - Considering whole system incorporating co-benefits.
  - Challenge existing data sources.
  - Address areas that we have struggled to monitor e.g. behaviour change.